

### Features:

- 16A switching capacity
- Low power consumption, pulse drive
- Compact size, PCB mount
- Single/Dual coils available
- Superior electrical durability and reliability
- Environmentally friendly products(Accord RoHS)
- Dimensions: 30mm×20mm×10.2mm

### Typical Application:

- Smart home
- Electrical control



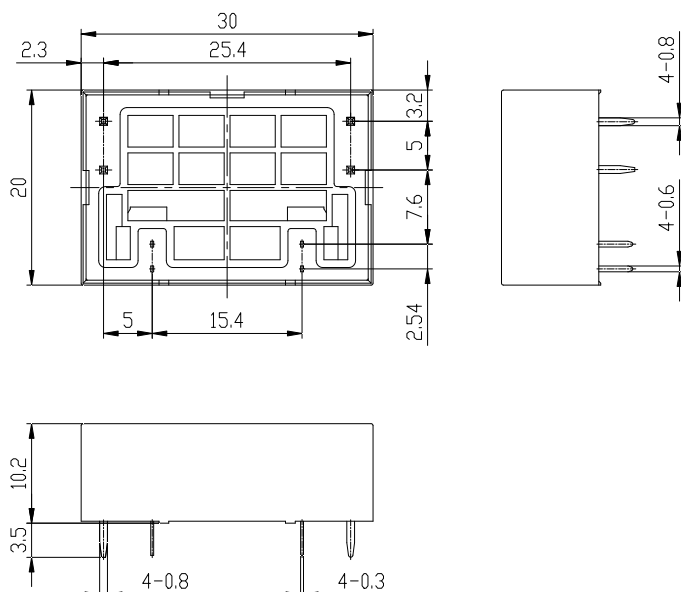
### Contact Data

Contact form	2 Form A or 2 Form B or 1 Form A + 1 Form B
Rated Load	16A 250VAC
Max.switching voltage	250V
Max.switching current	16A
Max.switching power	4000VA
Contact Material	Silver alloy
Contact resistance	≤20mΩ
Max.Operate/Release time	15ms/15ms
Electrical Endurance	5×10 <sup>4</sup> cycles (16A 250VAC Resistive load)
Mechanical Endurance	1×10 <sup>6</sup> cycles

### Insulation Data

Insulation Resistance	≥1,000MΩ (500VDC)
Dielectric Strength	Contact-Contact AC1,000V; 50/60Hz 1min
	Contact-Coil AC4,000V; 50/60Hz 1min

### Outline Dimensions (Unit: mm)



### Coil Data

Coil voltage range		5 to 48VDC		
Coil insulation system according UL		Class F		
Coil type, standard type				
Rated Volta VDC	Operate/Rele Voltage VDC	Coil resistance Single/Dual Ω (1±10%)	Rated power Single/Dual W	Pulse Duration ms
5	≤4.0	25/12.5	1/2	≥50
9	≤7.2	81/40.5	1/2	≥50
12	≤9.6	144/72	1/2	≥50
24	≤19.2	576/288	1/2	≥50
48	≤38.4	2304/1152	1/2	≥50
All figures are given for coil without pre-energization, at ambient temperature 20°C.				

All figures are given for coil without pre-energization, at ambient temperature 20°C.

### Other Data

Material compliance: EU RoHS/ELV, China RoHS, REACHHS		
Ambient Temperature		-40°C to +85°C
Ambient Humidity		5% ~ 85% RH
Vibration resistance		10 ~ 55Hz, 1.5mm DA
Shock resistance	Durability	100g
	Malfunction	10g
Packaging type		Plastic sealing type

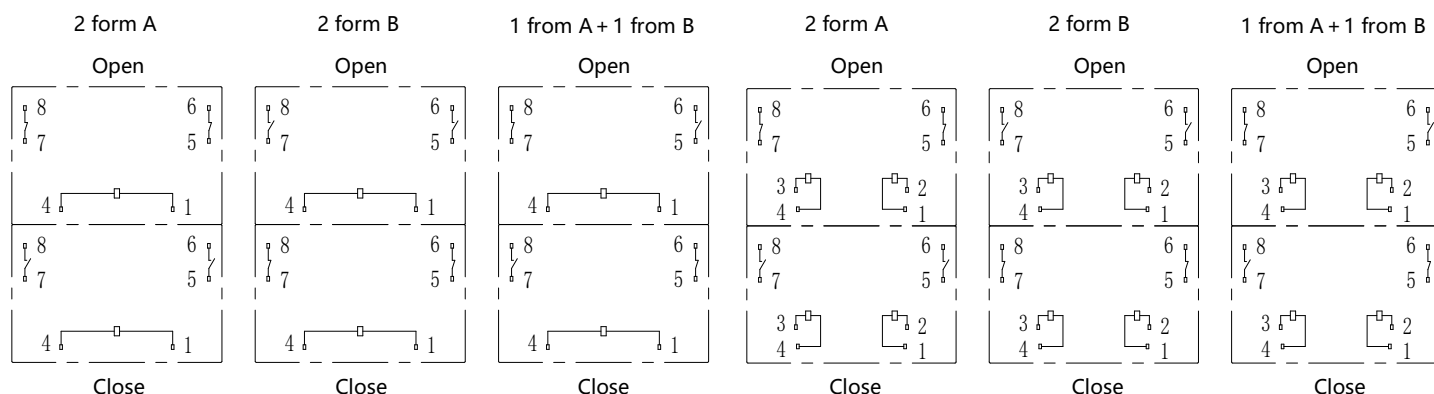
Note: Some product dimensional tolerance is not specified. When < 1mm, the tolerance is ±0.2mm; when between 1~5mm, the tolerance is ±0.3mm; when > 5mm, the tolerance is ±0.4mm.

## Wiring Diagrams

Single	Positive polarity	4-	Close	1+
		4+	Open	1-
	Reverse polarity	4+	Close	1-
		4-	Open	1+
Dual	Positive polarity	1+	Close	2-
		3+	Open	4-
	Reverse polarity	1-	Close	2+
		3-	Open	4+

### Single

### Dual



## Model naming rules

WJ32C	-1	-12	D	M	2	R	-XX	Special requirements: Customer requirement type
								Drive polarity: None - indicates standard polarity; R- indicates reverse polarity
								Coil Type: 1- means single coil; 2- means dual coil
								Contact form: M-2 from A ; B-2 from B ; C-1 from A+ 1 from B
								Coil Power Consumption: D - Standard Type
								Coil Specifications (VDC): 05 , 06 , 09 , 12 , 24
								Auxiliary switch: 1 - means there is an auxiliary switch; None - means no auxiliary switch
								Type: WJ32C

Customized special suffix is available after being evaluated by Sanyou.

## Examples of Ordering Codes

WJ32C-12-DM2

Relay WJ32C, Rated coil voltage 12VDC, Standard type, 2from A, Dual coils

## Cautions

1. The original position of latching relay is "closed" when shipping. It is possible that during transit or installation,the relay may change its state to be "open" position, it is recommended to set the relay in to state needed via apply voltage to the coil.
2. In order to let relay operate normally, the voltage which apply to the coil should reach to the rated voltage,the pulse width should be 50ms to 100ms Do not energize both coil at the same time on Dual coil or energize the coil for longer than minute.
3. Relay without copper wire, the terminal can not be soldered, bend, and rigid fasten both two terminals.
4. Keep away from corrosive gas and other condition which may damage the relay.

## Disclaimer

This product specification is for reference only and may change without prior notice. Customers should select the appropriate product model according to the performance parameter requirements of their specific application areas. The customer will bear the responsibility and loss caused by improper selection. For more technical support, please contact Sanyou Corporation Limited.