

Features :

- 100 amps rated load
- Ceramic brazing technology is used to prevent arcing leakage, fire and explosion
- No polarity requirement for contacts and coil
- RoHS compliant

Typical applications:

- DC high voltage high current applications
- Main contactors for hybrid, electrical vehicles and fuel-cell cars
- Battery charging systems



Contact Data

Contact arrangement	1form A
Rated voltage	1000V
Rated current	100A
Max.switch voltage	1000V
Min. recommended contact load	1A, 12VDC
Max.Breaking current	1000A,(500VDC,1cycle)
Contact resistance	≤0.5mΩ (at 20A)
Contact resistance	≤0.3mΩ (at 100A)
Operate/release time max.	30ms/10ms
Electrical endurance	Refers to electrical endurance graph

Auxiliary contact

Contact arrangement	/
Rated voltage	/
Rated current	/
Contact resistance	/

Contact ratings

	Current[A]	Voltage[V]	Switching cycles	ON:OFF
SEL100B-1000MXXL2	Breaking: 0/1000	500	1	0.6s:5.4s
	Breaking: 0/100	1000	100	0.6s:5.4s
	Breaking: 0/20	1000	3×10 ⁴	0.6s:5.4s
	Breaking: 0/10	1000	8×10 ⁴	0.6s:5.4s
SEL100B-800MXXL2	Breaking: 0/100	800	200	0.6s:5.4s
	Breaking: 0/20	800	3.5×10 ⁴	0.6s:5.4s
	Breaking: 0/10	800	8.5×10 ⁴	0.6s:5.4s
SEL100B-500MXXL2	Breaking: 0/100	500	500	0.6s:5.4s
	Breaking: 0/20	500	4×10 ⁴	0.6s:5.4s
	Breaking: 0/10	500	9×10 ⁴	0.6s:5.4s
Making:	180(1100uF)/0	50	7×10 ⁴	0.6s:5.4s
Mechanical endurance	0.003/0.003	24	2×10 ⁵	0.5s:0.5s

Insulation Data

Initial dielectric strength	
between open contacts	3000VAC 1min 1mA
between contact and coil	3000VAC 1min 1mA
between main and auxiliary contact	
max. Altitude	5500m
Insulation resistance	
between contact and coil	≥1000MΩ(1000VDC)
between open contacts	≥1000MΩ(1000VDC)

Coil Data

Coil voltage range:	12~24V
---------------------	--------

Coil versions, DC coil

(-40°C~85°C)

Rated voltage	Operate voltage	Release voltage	Max. voltage	Coil resistance at 23°C	Operating powers (at 23°C) (inrush,W)	Operating powers (at 23°C) (stable,W)
VDC	VDC	VDC	VDC	Ω(1±10%)		
12	≤9	≥1.0	16	24	6	6
24	≤18	≥2.0	32	96	6	6

1) Max.allowable voltage refers to the maximum value in a varying range of operating power voltage, not a continuous voltage.

2) Unless specified otherwise, ambient temperature:23°C, on:off /0.6s: 5.4s.

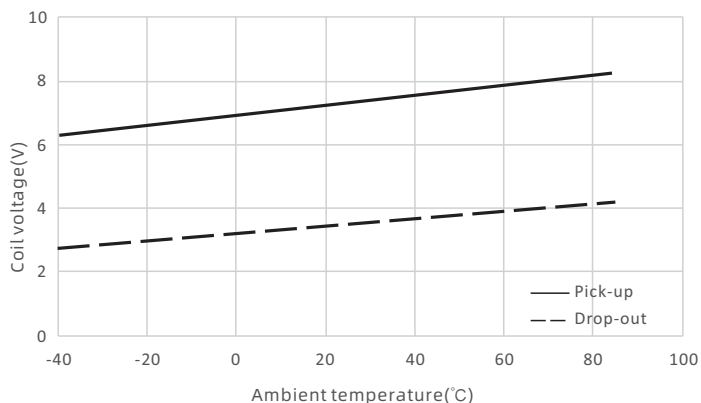
3)If other types of rated coil voltage is needed, please contact us.

Other Data

Ambient temperature	-40°C to +85°C
Ambient humidity	5% to 85% RH
Vibration resistance (functional)	10 to 500Hz, 49m/s ² (5G)
Shock resistance ¹⁾	
Functional	Closed state:196m/s ² (20G)
	Disconnected state: 98m/s ² (10G)
Destructive	490m/s ² (50G)
Terminal type	Connector (coil) and screw (load)
Weight	Approx. 200g
External dimension	L:69×34×60.8 S:64×34×60.8
Packaging unit	45pcs

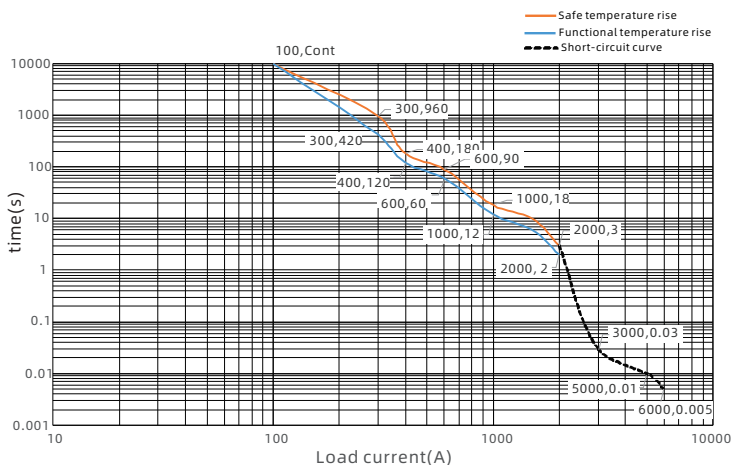
1) No change in the switching state >10μs.

Coil operating range



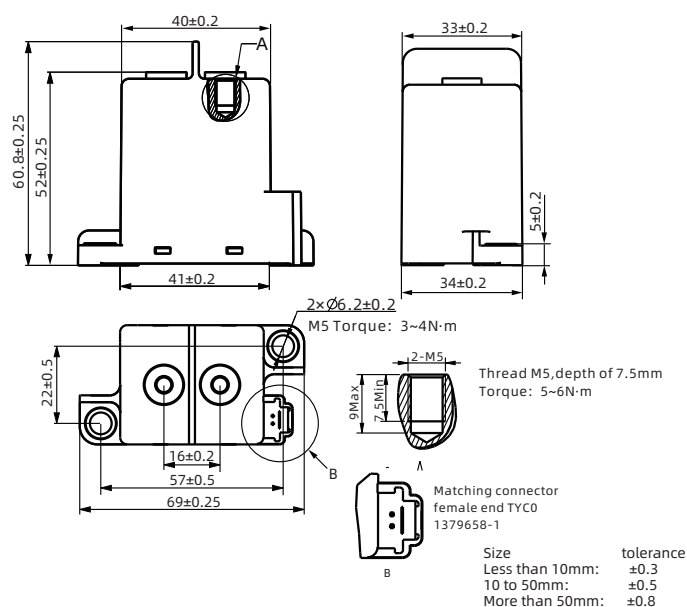
(1) Coil supplied voltage 12VDC;

Tolerance curve



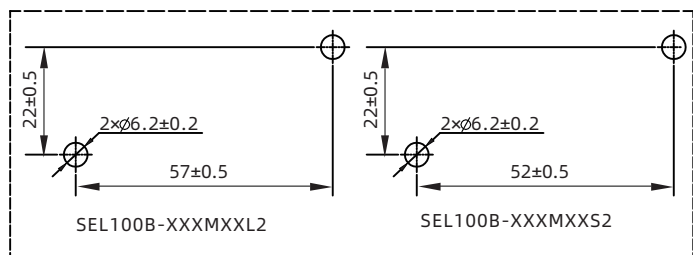
- (1) The upper limit of safety temperature is 180°C, and the upper limit of functional temperature is 150°C;
- (2) If the product needs to work for a long time, it is recommended that the product temperature should not exceed 150°C. If the safety temperature exceeds 180°C, the relay may be ignited;
- (3) Ambient temperature is 85°C, wire cross sectional area $\geq 35\text{mm}^2$; (Test conditions for this curve)
- (4) Relay load current over 2000A is short circuit resistance performance. The relay can guarantee no fire or explosion within this curve. When the current is greater than 3000A, the relay contact may be repulsed by a large current.

Outline Dimensions: SEL100B-XXXMXXL2

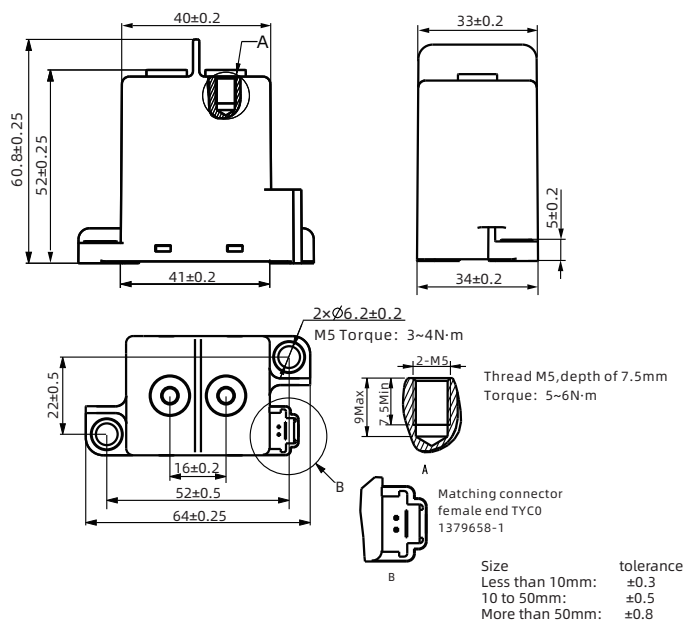


- 1) Maximum torque is allowed to be installed as shown, only one-time installation is allowed, and repeated tightening of screws is not allowed.
- 2) Mount load connections first.

Installation Size Chart



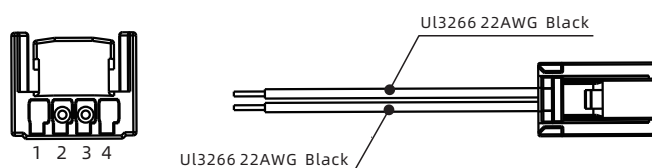
Outline Dimensions: SEL100B-XXXMXXS2



- 1) Maximum torque is allowed to be installed as shown, only one-time installation is allowed, and repeated tightening of screws is not allowed.
- 2) Mount load connections first.

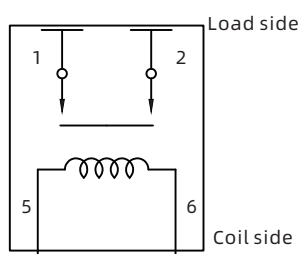
Coil Connection Type

Connectors: TYCO 1379658-1 (not included in the box)



Note: Coil side drivers use 2 and 3.

Schematic Diagram



Note: No polarity on Load side and Coil side.

Product Code Structure

		SEL	100B -	<input type="checkbox"/>	M	<input type="checkbox"/>	<input type="checkbox"/>	2	
Type designation		SEL							
Series Code:		100B: 100A							
Rated Load Voltage(VDC):		500: 500VDC 800: 800VDC 1000: 1000VDC							
Contact Arrangement:		M: Form A							
Rated Coil Voltage(VDC):		12: 12VDC 24: 24VDC							
Installation dimension		L: the mounting hole spacing is 57*22 S: the mounting hole spacing is 52*22							
Load connection type:		2: Internalthread							
Customer special code:		Nil: No costomer special requirement Numbers or Letters: Customer special requirement							

Examples of Ordering Codes

SEL100B-800M12L2 The load voltage is 800V,Coil voltage 12V
SEL100B-500M24S2 The load voltage is 500V,Coil voltage 24V

Notes**● Mounting Precautions**

1. By principle, please do not use it when the relay drops on the ground.
2. It's forbidden to use the product at the temperature beyond $-40^{\circ}\text{C} \sim 85^{\circ}\text{C}$ for a long time as the relay contacts are sealed and filled with gas and when the contact temperature changes, the gas will break the ceramic sealed chamber.
3. When installing the relay, always use washers to prevent the screws from loosening.
4. Tighten each screw with given torque as suggested. Exceeding the maximum torque may result in screw loose, breakage, etc. When using screws, please make sure the washers are strong enough to prevent the case from deformation.
5. Avoid mounting the relay near strong magnetic fields or a heat generator.

● Precautions for connection of the load terminals

1. Please avoid excessive load applied to the product. If the product exceeds the rated range, the performance of the product cannot be guaranteed.
2. Please treat the relay as a product with limited life and replace it when necessary.
3. Be careful that foreign particles or oil attach on the terminals will lead to abnormal heating on terminals. And below connectors or conductors with sizes are suggested.

10A	Min. 2mm^2 nominal cross-sectional area
20A	Min. 3mm^2 nominal cross-sectional area
40A	Min. 10mm^2 nominal cross-sectional area
60A	Min. 15mm^2 nominal cross-sectional area
100A	Min. 35mm^2 nominal cross-sectional area
150A	Min. 45mm^2 nominal cross-sectional area
200A	Min. 60mm^2 nominal cross-sectional area
250A	Min. 80mm^2 nominal cross-sectional area
300A	Min. 100mm^2 nominal cross-sectional area
400A	Min. 200mm^2 nominal cross-sectional area

● Precautions for connection of the coil

1. Please note that when using a diode, the release time will increase and the switching capacity may decrease. We recommend installing a surge protector varistor.
2. The pick-up voltage and drop-out voltage will change with ambient temperature, please use rated voltage to make sure the relay operate reliably. Don't exceed maximum coil voltage.
3. Please do not continuously apply maximum voltage on the coil.
4. Products with economizer, are recommend to use increase rapidly (phase step power supply mode) to drive the coil.
5. Products with economizer, the coil current will automatically switch after 0.1s. Please do not repeat switch the coil voltage at $< 0.1\text{s}$, otherwise the Product performance can be not guarantee.

Disclaimer:

This datasheet is for customer's reference only. Sanyou had tried its best to ensure the information accuracy but impossible to be avoided all the incorrects. The product specification and parameter might be change due to the product improvement. All of specification are subject to change without notice, please refer to the specification and samples.

We could not evaluate all the performance and parameters for every possible application. Thus the users should be in a right position to choose the suitable product for their own application. If there is any query, please contact Sanyou for technical service. However it is the users' responsibility to determine which product should be used only.