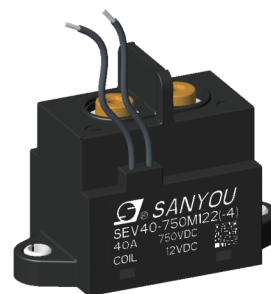


Features :

- 40 amps rated load
- Ceramic brazing technology is used to prevent arcing leakage, fire and explosion
- Contact has polarity requirements, coil has no polarity requirements
- RoHS compliant

Typical applications:

- Commercial vehicle pre-charging relay
- Heating relay



UL, c-UL (File No.):
E179745-1-43



Contact Data

Contact arrangement	1form A
Rated voltage	1000V
Rated current	40A
Max.switch voltage	1000V
Min. recommended contact load	1A, 12VDC
Max.Breaking current	400A,(1000VDC,1cycle)
Contact resistance	≤3.5mΩ (at 20A)
Contact resistance	≤1.75mΩ (at 40A)
Operate/release time max.	30ms/10ms
Electrical endurance	Refers to electrical endurance graph

Auxiliary contact

Contact arrangement	/
Rated voltage	/
Rated current	/
Contact resistance	/

Contact ratings

		Current[A]	Voltage[V]	Switching	ON:OFF
		on / off	on / off	cycles	
SEV40-1000MXX2(-X)	Breaking: 0/400		1000	1	0.6s:5.4s
	Breaking: 0/40		1000	3000	0.6s:5.4s
	Breaking: 0/20		1000	3×10 ⁴	0.6s:5.4s
	Breaking: 0/10		1000	8×10 ⁴	0.6s:5.4s
SEV40-750MXX2(-X)	Breaking: 0/40		750	3000	0.6s:5.4s
SEV40-500MXX2(-X)	Breaking: 0/40		500	5000	0.6s:5.4s
Making:	40/0		1000	5×10 ⁴	0.6s:5.4s
Mechanical endurance	0.003/0.003		24	2×10 ⁵	0.5s:0.5s

Insulation Data

Initial dielectric strength		
between open contacts		3000VAC 1min 1mA
between contact and coil		3000VAC 1min 1mA
between main and auxiliary contact		
max. Altitude		5500m
Insulation resistance		
between contact and coil		≥1000MΩ(1000VDC)
between open contacts		≥1000MΩ(1000VDC)
Clearance/creepage		
acc.UL60947 for		Uimp=8KV,case B pollution degree 1

Coil Data

Coil voltage range:	12~48V
---------------------	--------

Coil versions, DC coil

(-40℃~85℃)

Rated voltage	Operate voltage	Release voltage	Max. voltage	Coil resistance at 23℃	Operating powers (at 23℃)	Operating powers (at 23℃)
VDC	VDC	VDC	VDC	Ω(1±10%)	(inrush,W)	(stable,W)
12	≤9	≥1.0	16	48	3	3
24	≤18	≥2.0	32	192	3	3
48	≤36	≥4.0	64	768	3	3

1) The release time of the product with a coil voltage of 48V ≤15ms;

2) Unless specified otherwise, ambient temperature:23℃, on:off /0.6s: 5.4s;

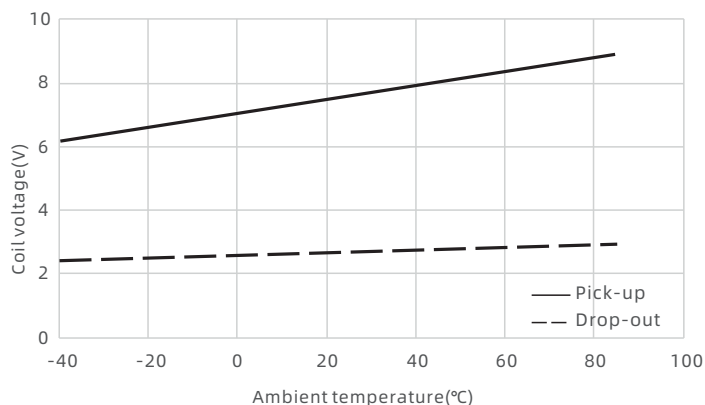
3) If other types of rated coil voltage is needed,please contact us.

Other Data

Ambient temperature	-40℃ to +85℃
Ambient humidity	5% to 85% RH
Vibration resistance (functional)	10 to 500Hz, 49m/s ² (5G)
Shock resistance ¹⁾	
Functional	Closed state:196m/s ² (20G)
	Disconnected state: 196m/s ² (20G)
Destructive	490m/s ² (50G)
Terminal type	Connector (coil) and screw (load)
Weight	Approx. 155g
External dimension	67×32.6×50.5
Packaging unit	54pcs

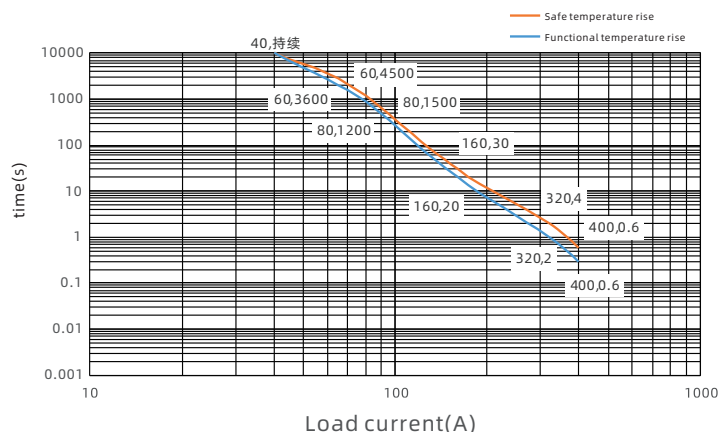
1) No change in the switching state >10us.

Coil operating range



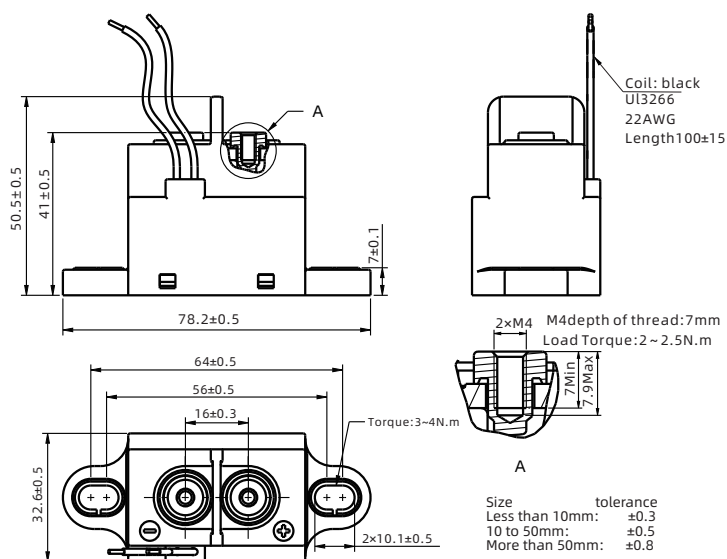
1) Coil supplied voltage 12VDC;

Tolerance curve



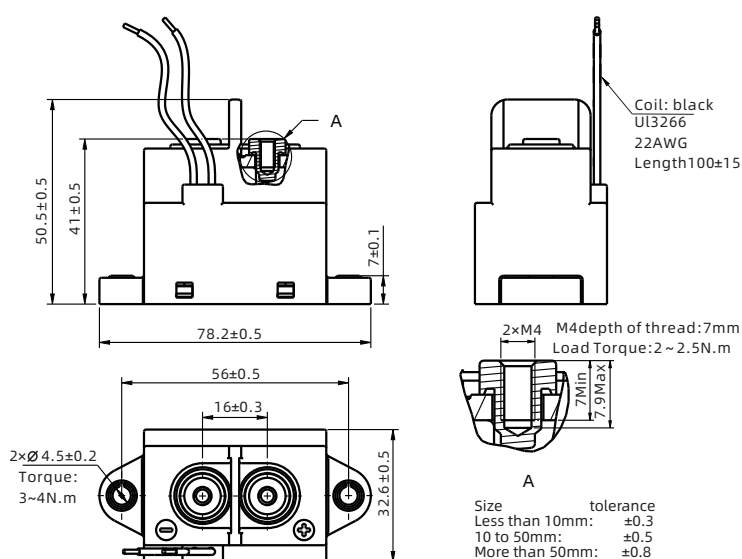
- 1) The upper limit of safety temperature is 180°C, and the upper limit of functional temperature is 150°C;
- 2) If the product needs to work for a long time, it is recommended that the product temperature should not exceed 150°C. If the safety temperature exceeds 180°C, the relay may be ignited;
- 3) Ambient temperature is 85°C, wire cross sectional area $\geq 10\text{mm}^2$. (Test conditions for this curve)

Outline Dimensions: SEV40-XXXMXX2(-3)



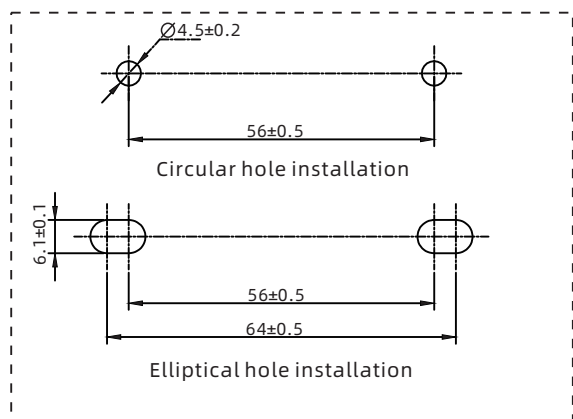
- 1) Maximum allowable torque as shown in the figure. One-time mounting only, no recurring screw fastening permitted;
- 2) Mount load connections first.

Outline Dimensions: SEV40-XXXMXX2(-4)

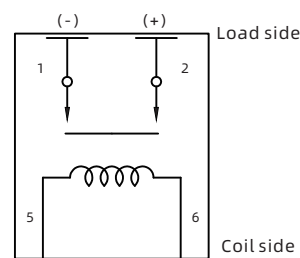


- 1) Maximum allowable torque as shown in the figure. One-time mounting only, no recurring screw fastening permitted;
- 2) Mount load connections first.

Installation Size Chart



Schematic Diagram



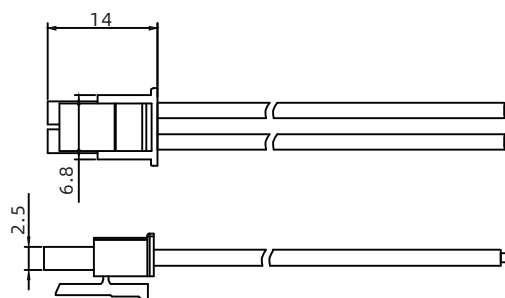
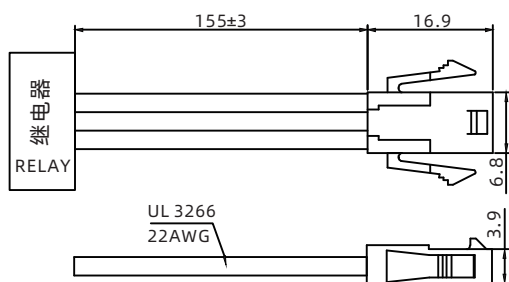
Note: The load side has polarity
No polarity on coil side

Coil Connection Type

C: Lead out line+connector

Connector housing model:MOLEX-43640-0200
Crimping terminal:MOLEX-43031-0001

Connector housing model:MOLEX-43645-0200
Crimping terminal:MOLEX-43030-0001
(Not included in the product)



Product Code Structure

				SEV	40 -	<input type="checkbox"/>	M	<input type="checkbox"/>	<input type="checkbox"/>	2	<input type="checkbox"/>
Type designation											
SEV											
Series Code:											
40: 40A											
Rated Load Voltage(VDC):											
500: 500VDC				750: 750VDC				1000: 1000VDC			
Contact Arrangement:											
M: Form A											
Rated Coil Voltage(VDC):											
12: 12VDC				24: 24VDC							
Coil terminal connection method:											
empty: With leadouts				C:With leadouts + connector							
Load connection type:											
2: Internalthread											
Customer special code:											
(-3) : Elliptical hole installation				(-4): Circular hole installation							
Numbers or Letters: Customer special requirement											

Examples of Ordering Codes

SEV40-1000M122 (-4)

The load voltage is 1000V,Coil voltage 12V, Coil end with lead wire, Circular hole installation

SEV40-750M242 (-3)

The load voltage is 750V,Coil voltage 24V, Coil end with lead wire, Elliptical hole installation

SEV40-1000M12C2 (-4)

The load voltage is 1000V,Coil voltage 12V, Coil end with connector, Circular hole installation

SEV40-750M24C2 (-3)

The load voltage is 750V,Coil voltage 24V, Coil end with connector, Elliptical hole installation

Notes**● Mounting Precautions**

1. By principle, please do not use it when the relay drops on the ground.
2. It's forbidden to use the product at the temperature beyond $-40^{\circ}\text{C} \sim 85^{\circ}\text{C}$ for a long time as the relay contacts are sealed and filled with gas and when the contact temperature changes, the gas will break the ceramic sealed chamber.
3. When installing the relay, always use washers to prevent the screws from loosening.
4. Tighten each screw with given torque as suggested. Exceeding the maximum torque may result in screw loose, breakage, etc. When using screws, please make sure the washers are strong enough to prevent the case from deformation.
5. Avoid mounting the relay near strong magnetic fields or a heat generator.

● Precautions for connection of the load terminals

1. Please avoid excessive load applied to the product. If the product exceeds the rated range, the performance of the product cannot be guaranteed.
2. Please treat the relay as a product with limited life and replace it when necessary.
3. Be careful that foreign particles or oil attach on the terminals will lead to abnormal heating on terminals. And below connectors or conductors with sizes are suggested.

10A	Min. 2mm^2 nominal cross-sectional area
20A	Min. 3mm^2 nominal cross-sectional area
40A	Min. 10mm^2 nominal cross-sectional area
60A	Min. 15mm^2 nominal cross-sectional area
100A	Min. 35mm^2 nominal cross-sectional area
150A	Min. 45mm^2 nominal cross-sectional area
200A	Min. 60mm^2 nominal cross-sectional area
250A	Min. 80mm^2 nominal cross-sectional area
300A	Min. 100mm^2 nominal cross-sectional area
400A	Min. 200mm^2 nominal cross-sectional area

● Precautions for connection of the coil

1. Please note that when using a diode, the release time will increase and the switching capacity may decrease. We recommend installing a surge protector varistor.
2. The pick-up voltage and drop-out voltage will change with ambient temperature, please use rated voltage to make sure the relay operate reliably. Don't exceed maximum coil voltage.
3. Please do not continuously apply maximum voltage on the coil.
4. Products with economizer, are recommend to use increase rapidly (phase step power supply mode) to drive the coil.
5. Products with economizer, the coil current will automatically switch after 0.1s. Please do not repeat switch the coil voltage at $< 0.1\text{s}$, otherwise the Product performance can be not guarantee.

Disclaimer:

This datasheet is for customer's reference only. Sanyou had tried its best to ensure the information accuracy but impossible to be avoided all the incorrects. The product specification and parameter might be change due to the product improvement. All of specification are subject to change without notice, please refer to the specification and samples.

We could not evaluate all the performance and parameters for every possible application. Thus the users should be in a right position to choose the suitable product for their own application. If there is any query, please contact Sanyou for technical service. However it is the users' responsibility to determine which product should be used only.