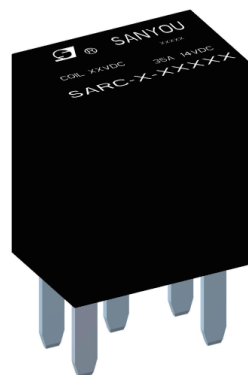


Features:

- 35A switching capability.
- NO type and CO type are available.
- Material compliance (Compliant with RoHS)

Typical Applications:

- Heater, fan control, fuel pump control, wiper control, headlight control.
- Car air conditioner, electromagnet control, lighting control, lighting control, interlocks office equipment, etc.



Contact Data

Contact arrangement	1 Form A/1 Form C
Contact material	silver alloy
Contact voltage drop	200mV Max (at 10A)
Contact load	

Contact voltage	Load type		Contact current (A) 1C、1A		Electrical endurance (OPS)
			NO	NC	
14VDC	resistive	on	35	20	1×10 ⁵
		off	35	20	
	lamp load	on	150	—	1×10 ⁵
		off	30	—	
	general	on	80	—	1×10 ⁵
		off	30	—	

Note: coil voltage 12VDC, frequency 2s on:2s off, room temperature.

Minimum contact load	1A,6VDC
Operate time (at nominal volt.)	≤10ms
Release time (at nominal volt.)	≤10ms

Coil Data

Nominal Voltage (VDC)	Nominal Operating Current ±10% (A)	Coil Resistance ±10% (Ω)	Parallel Resistance (Ω)	Equivalent Resistance (Ω)	Max. Allowable Voltage (VDC)	Operate Voltage (VDC)	Release Voltage (VDC)	Nominal Operating Power (W)
12	0.1	120	---	---	15.6	≤7.2	≥1.2	1.2
24	0.05	480	---	---	31.2	≤14.4	≥2.4	1.2
12	0.1	120	680	105.4	15.6	≤7.2	≥1.2	1.4
24	0.05	480	2700	407.5	31.2	≤14.4	≥2.4	1.4

Note: To prevent overheating and burnout, the coil should not be continuously subjected to a voltage greater than the maximum allowable voltage.

Insulating Data

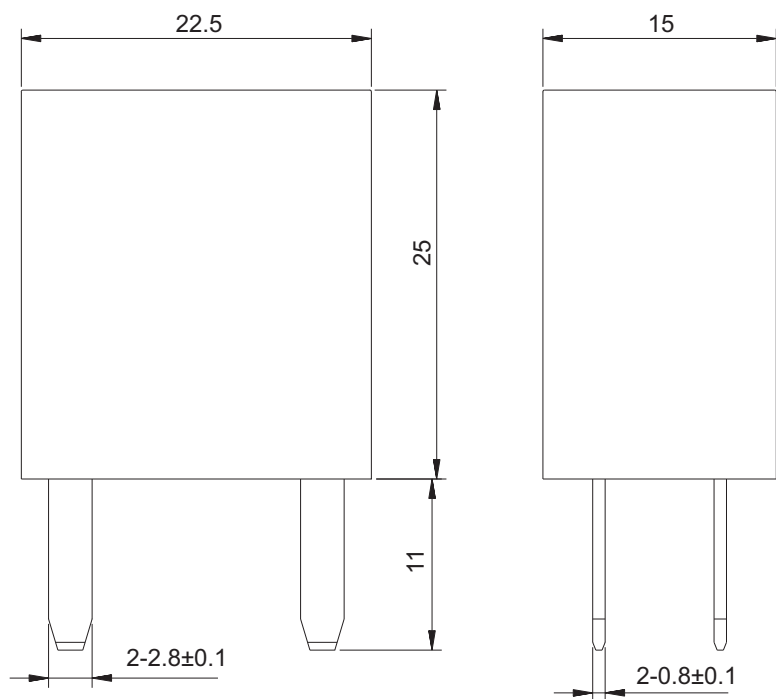
Insulation resistance	100MΩ (500VDC)
Dielectric strength	
Between open contacts:	500VAC, 50/60Hz 1min.
Between coil and contact:	500VAC, 50/60Hz 1min.

Other Data

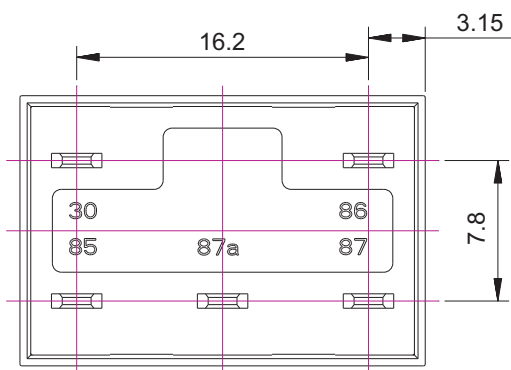
Shock resistance	NO 20G NC 5G
Vibration resistance	10~25Hz 1.27mm DA 20~500Hz, 10G
Mechanical endurance	1×10 ⁷ ops
Ambient temperature	-40℃ to +125℃ (no condensation)
Humidity	5% to 85%RH
Weight	Approx. 19.4g

Note: The above values are initial values

Dimensions



Wiring Diagram(bottom view)



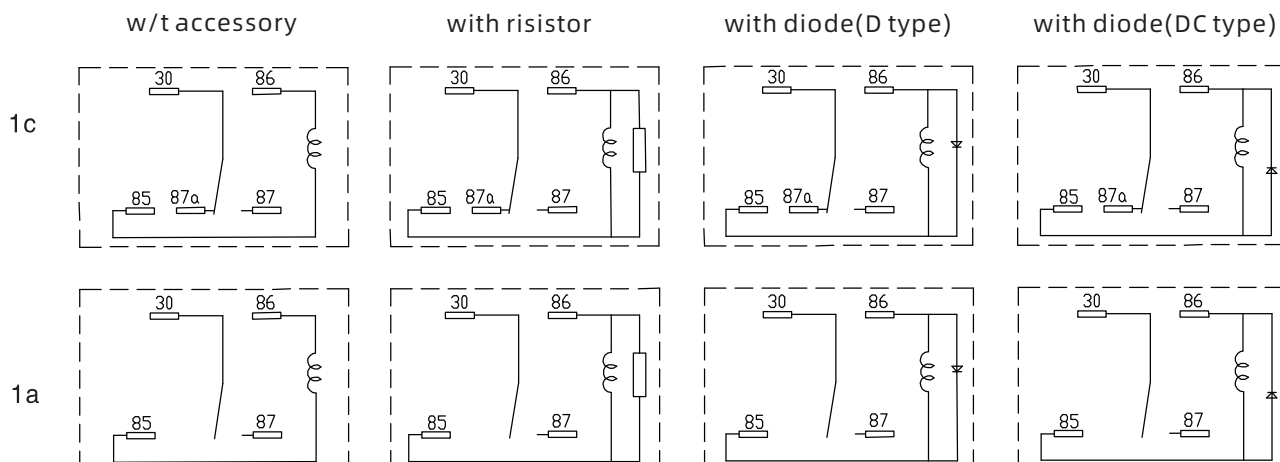
Unless otherwise specified:

If dimension < 1mm, tolerance: $\pm 0.2\text{mm}$;
If dimension 1~5mm, tolerance: $\pm 0.3\text{mm}$;
If dimension > 5mm, tolerance: $\pm 0.4\text{mm}$;

Note:

- 1.Extended terminal dimension is dimension before soldering
- 2.Tolerance of mounting holes: $\pm 0.1\text{mm}$

接线图



Product Code Structure

SARC	-S	- 1	12	D	M	R	-XX	
								Special Parameter: Nil-Standard type, Letter or number-Special requirement
								Accessory Form: Nil-Without accessory,R-With resistor, D-With diode,DC-With diode(see wiring diagram)
								Contact Form: Nil-Form C , M-Form A
								Coil Power: D-1.2W/1.4W
								Coil Voltage (VDC): 12 , 24
								Number of Poles: 1-1 Pole
								Protective Construction:Nil-Dust cover,S-Flux proofed, SH-Sealed type washable
								Type Designation:SARC

Disclaimer:

This product specification is for reference only, subject to change without prior notice.

We could not evaluate all test conditions for every possible application, thus customers should be in a right position to choose suitable products for their own application. If in doubt, please contact Sanyou for more technical support. However, it's the customer's responsibility to determine which product should be used.