

Features

- 70A Contact switching capability
- High working temperature 125°C
- 1 Form A contact available
- Fluxproof and sealed type available
- Resistance or diode paralleled type available

Contact Capacity

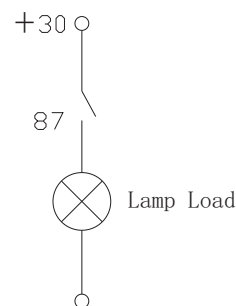
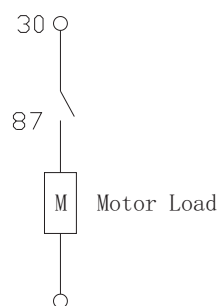
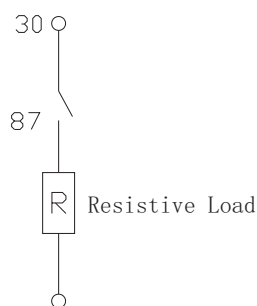
| | |
|---------------------------------------|--|
| Model | SARJ |
| Nominal Switching capacity (res.load) | normal:70A 14VDC |
| Max. switching current(normal) | on(NO):200A (surge current in lamp load , 14VDC) off(NO):70A (resistive load,14VDC) |
| Max. persistent current | 70A at23°C 50A at85°C |

Contact Data

| Contact rating voltage | Load type | | contact rating current (A) Form A 1-1pole | duty factor | endurance (cycles) | contact material |
|------------------------|-----------|-----|--|-------------|--------------------|--------------------|
| 14VDC | res. | on | 70 | 2S | 1x10 ⁵ | AgSnO ₂ |
| | | off | 70 | 2S | | |
| | motor | on | 150 ^a | 2S | 1x10 ⁵ | AgSnO ₂ |
| | | off | 50 | 4S | | |
| | lamp | on | 200 ^a | 2S | 1x10 ⁵ | AgSnO ₂ |
| | | off | 40 | 2S | | |
| 27VDC | res. | on | 40 | 2S | 1x10 ⁵ | AgSnO ₂ |
| | | off | 40 | 2S | | |

a. Time ratio of Peak current:Stable current is 1:10.

Wiring Diagram for different Loads:



Characteristic Data

| | |
|--|---|
| Contact Material | Silver Alloy |
| Dropping Voltage of Contacts | 200mv/at 10A (max) |
| Operate Time | 10msec. Max. |
| Release Time | Ordinary type:10msec.Max. with resistor or diode type :15 msec. Max. |
| Initial Insulation Resistance | 100MΩ Min.(DC500V) |
| Initial Dielectric Strength | OP/OP : AC500V , 50/60Hz for 1min. |
| | IP/OP : AC500V , 50/60Hz for 1min. |
| Vibration Resistance | 5 ~ 22.3Hz at double amplitude of 10 mm 22.3~500Hz 98m/s ² |
| Shock Resistance | NO 30G |
| Collision Response acceleration (T/TC Type) | The relay will respond when acceleration is > 30g 11msec. The relay will not respond when acceleration is <10g 11msec. |
| Endurance (operate) | Mechanical (10,800 ops./h) 1x10 ⁷ cycles |
| | Electrical (900 ops./h) See the contact parameters table |
| Ambient Temperature | -40°C ~ +125°C(no condensation) |
| Unit Weight | Approx. 36.0g |

Coil Data(at 20°C)

| Nominal Voltage (VDC) | Nominal Operating Current ±10%(mA) | Coil Resistance ±10%(Ω) | Parallel Resistance (Ω) | Equivalent (Ω) | Max. allowable Resistance Voltage | Pick-up Voltage (Max.) | Drop-out Voltage (Min.) | Coil Power (W) |
|-----------------------|------------------------------------|-------------------------|-------------------------|----------------|-----------------------------------|------------------------|-------------------------|----------------|
| 12 | 133.33 | 90 | --- | --- | 150% of Nominal Voltage | 60% of Nominal Voltage | 10% of Nominal Voltage | Approx. 1.6 |
| 12 | 133.33 | 90 | 680 | 80 | | | | Approx. 1.8 |
| 24 | 66.7 | 360 | --- | --- | | | | Approx. 1.6 |
| 24 | 66.7 | 360 | 2700 | 320 | | | | Approx. 1.8 |

Ordering Information

Nomenclature

SARJ - S - 1 12 D M F R -XX

Special Parameter : Nil-Standard type ,
01-terminal without hole

Accessory Form: Nil-without accessory, R-with resistor
D-with diode(see wiring diagram)
DC-with diode(see wiring diagram)

Mounting type : Nil-without bracket , F-with iron
bracket , P-PCB type

Contact Form : M-Form A ,

Coil Power : D-1.6W/1.8W

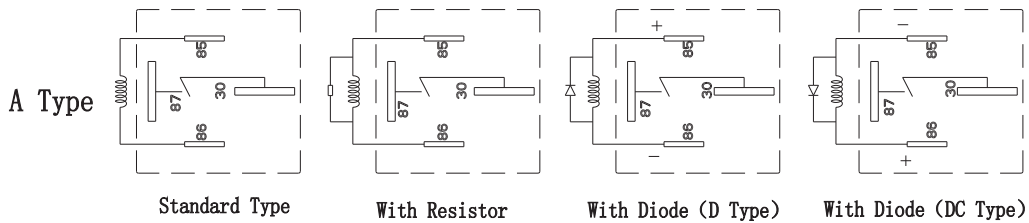
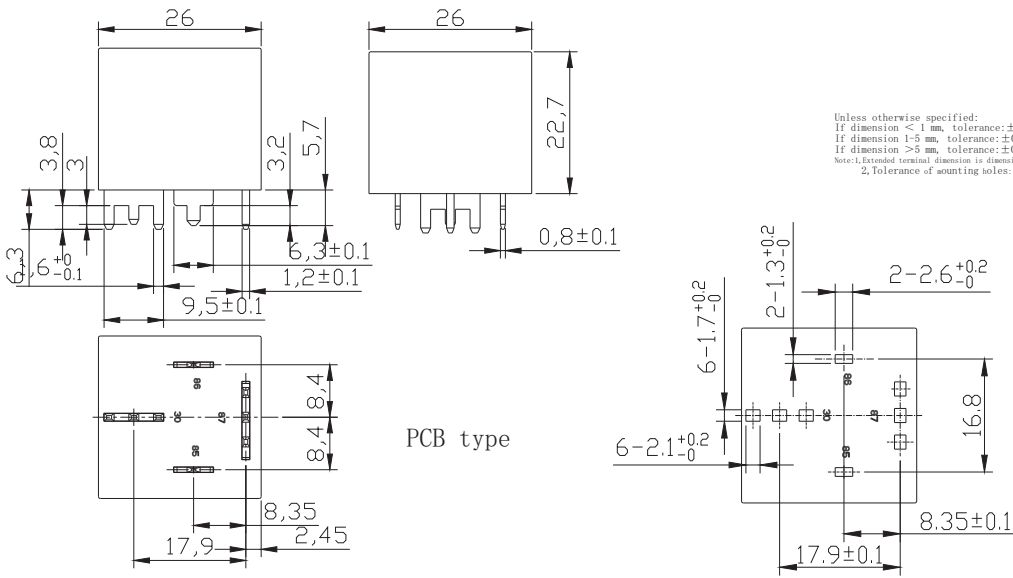
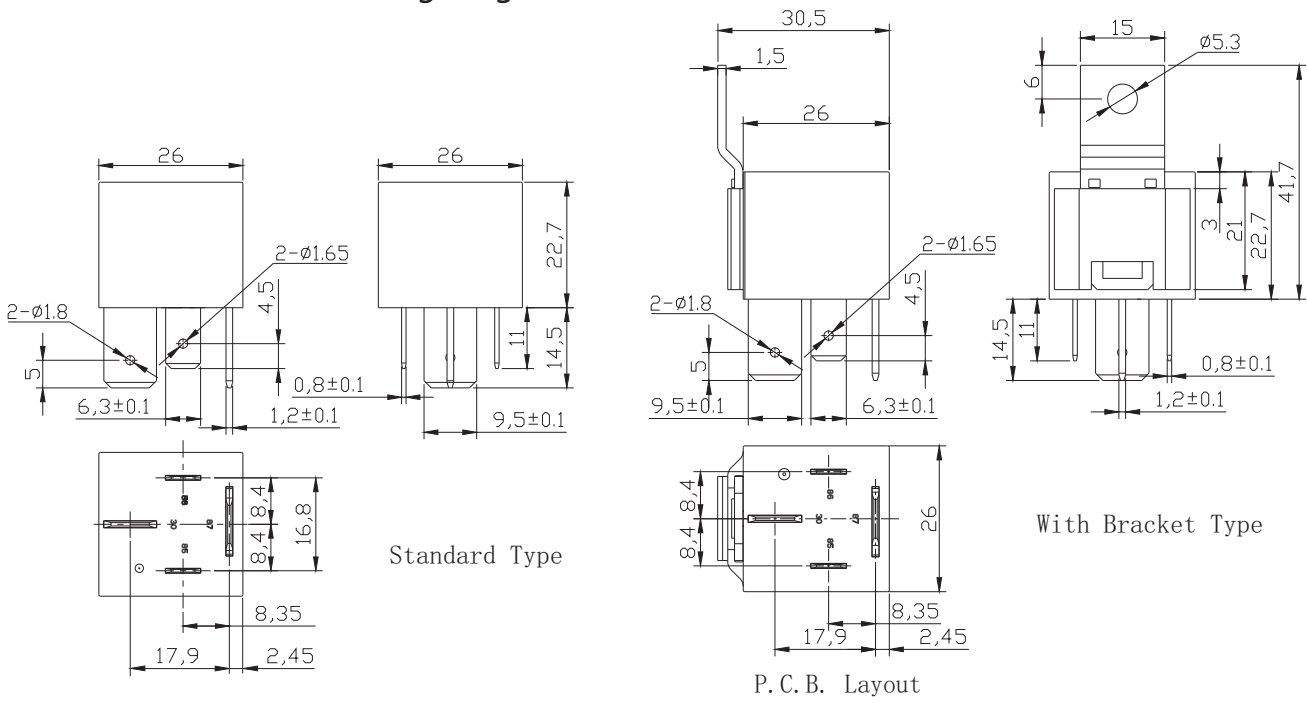
Coil Voltage(VDC) : 12 , 24

Number of Poles : 1-1 Pole

Protective Construction:Nil-Dustproof,S-Fluxproof

Type Designation : SARJ

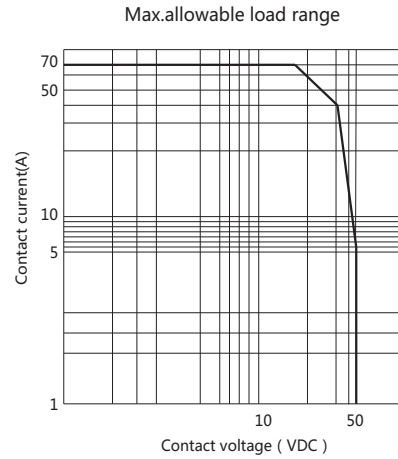
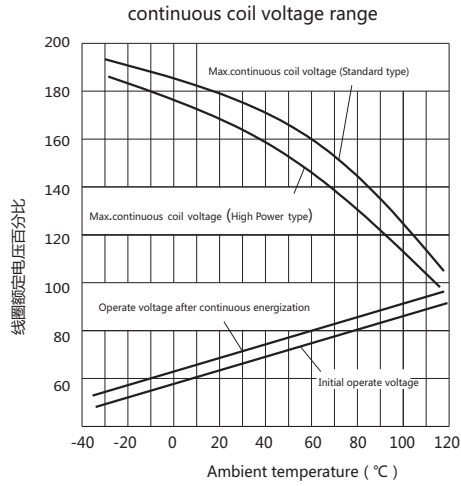
Outline Dimensions, Wiring Diagram



Typical Applications

- rear window defogger、 battery breaking device、 automotive AC、 foglight control、 headlight control
- electric power distributor、 ABS、 traction control system.

Characteristic Curves



Disclaimer :

This datasheet is the customers' reference. All the specification are subject to change without notice.
 We could not evaluate all the performance and parameters for every possible application. Thus the users should be in a right position to choose the suitable product for their own application. If there is any query, please contact Sanyou for technical service. However it is the users' responsibility to determine which product should be used only.

© Sanyou Corporation Limited ,All rights of Sanyou to reserved